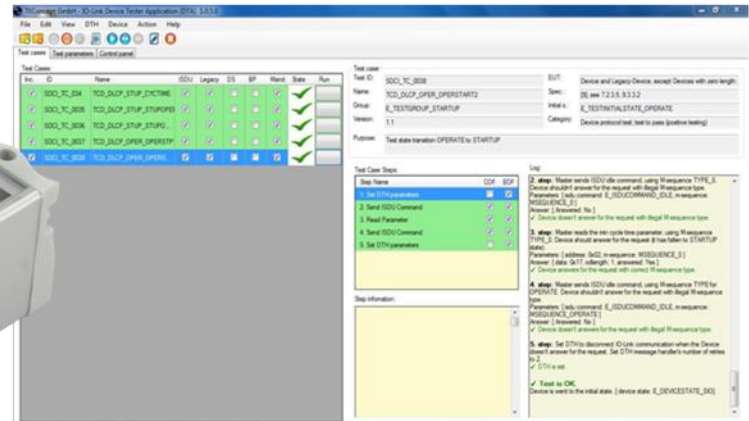




Use IO-Link Device Tester V1.1.3 Universal · Smart · Easy



Overview

Every manufacturer of an IO-Link compliant Device needs to issue a manufacturer's declaration of compliance.

This requires that numerous tests that are defined in the IO-Link test specification must be executed. This Device Tester simplifies the execution of many of these protocol compliance tests. The TEConcept Device Tester is powered by an external 24V power supply, controlled via a USB port and offers a standard M12 connector to connect the Devices Under Test "DUT". A PC software tool imports the IODD of the DUT and automatically adjusts most of its test procedure parameters according to the capabilities of the DUT.

The test cases are defined by XML-files that are accessible by the user.

Additional tests such as checking the validity ranges of device-specific parameters can easily be added by extending the test procedures in XML.

Deliverables

- Device Tester Hardware
- 24V power supply
- Device Tester Application (Windows based)

Device Tester Features

- Complies to IO-Link Test specification V1.1.3
- IO-Link profiles (Firmware Update, BLOB Transfer, etc. are supported)
- Extensible with customer specific test cases
- USB control
- External 24V/300mA power supply
- Class A M12 IO-Link master connector
- Approved by IO-Link Quality Working Group

Device Tester PC Application Features

- Graphical User Interface
- Test Report generation in PDF format
- Selectable Test Case execution
- Step-By-Step test report
- Hex-Trace of IO-Link communication
- Log- and Trace File export
- Session store/restore (project file)
- Firmware update feature
- Temporal downgrade to an USB master is possible